

MacroStd & MacroHP

Macro...

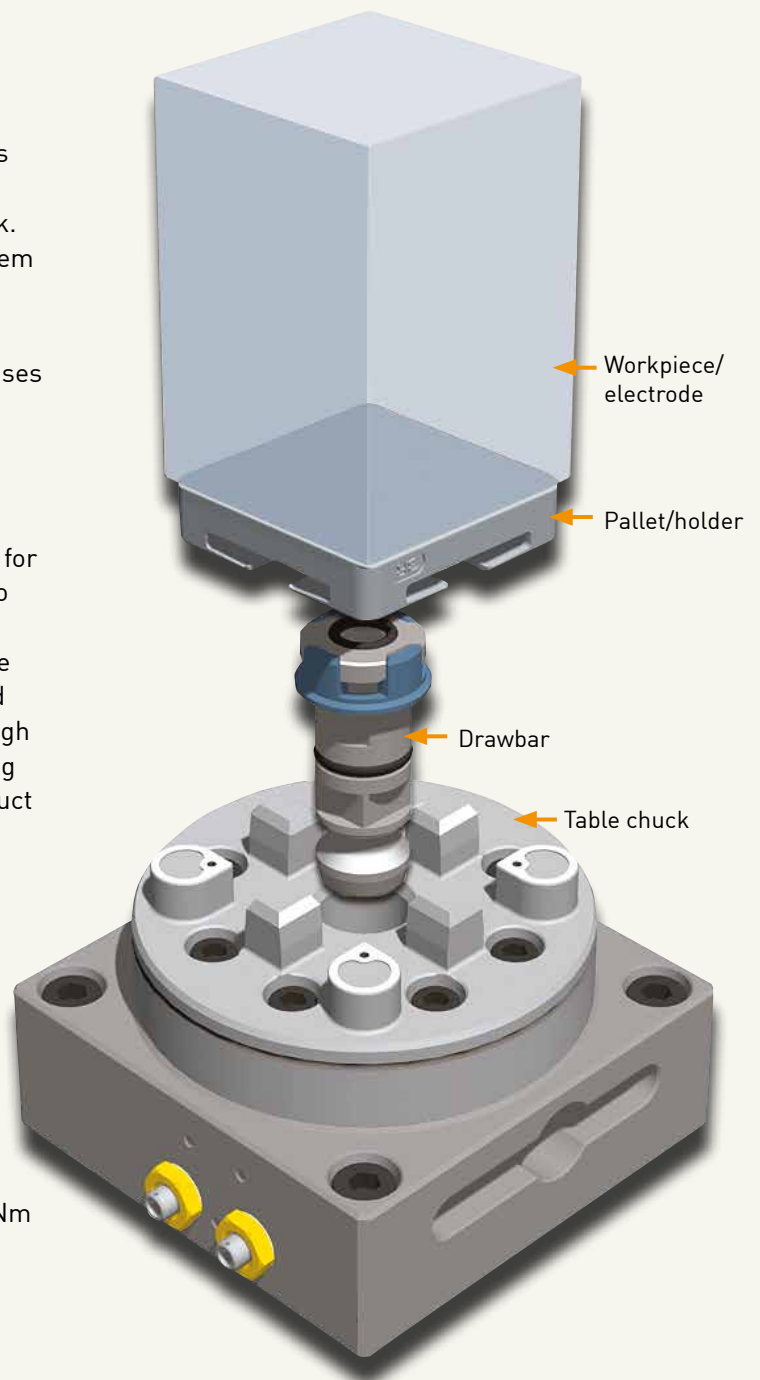
- ... reduces setting-up times.
- ... ensures precision and quality.
- ... has automatic air-blast cleaning of the references in the pneumatic chucks.
- ... has higher locking force in the pneumatic chucks – turbo locking.
- ... has references of cemented carbide or hardened ground steel.
- ... is suitable for automatic changing with System 3R's automation program.

If you want to compete in the global manufacturing industry, you need to study every aspect of efficiency. It's a matter of extracting the highest possible number of spindle-hours from each machine, every day of the week. And here, the importance of a high-class reference system can never be over-estimated. A reference system which reduces setup times to a few minutes.

Macro is such a reference system. A system that minimises the throughput time, and which, thanks to its accuracy, practically eliminates rejects. A system that increases flexibility and profitability. A system that increases competitiveness and ensures the success of its users.

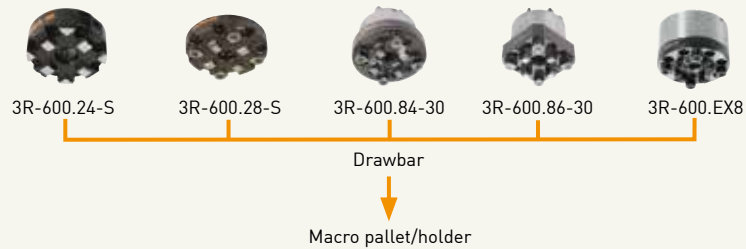
Among users world wide, the Macro system is a byword for precision. And with good reason, since very single Macro product is thoroughly checked before it is dispatched. But precision can be graded too. The Macro products are therefore "classified" in terms of accuracy, material and life – but always with full compatibility – as Standard, High Performance and Nano. Even so, it's worth remembering that the accuracy of a system is determined by the product with the lowest classification.

- + Repetition accuracy:
 - MacroNano – within 0.001 mm
 - MacroHighPerformance – within 0.0015 mm
 - MacroStandard – within 0.002 mm
- + Locking force – 6000 N
- + Fixed index positions – 4x90°
- + Required air pressure, pneumatic chuck – 6±1 bar
- + Recommended tightening torque, manual chuck – 6 Nm
- + Recommended max workpiece weight – 50 kg.

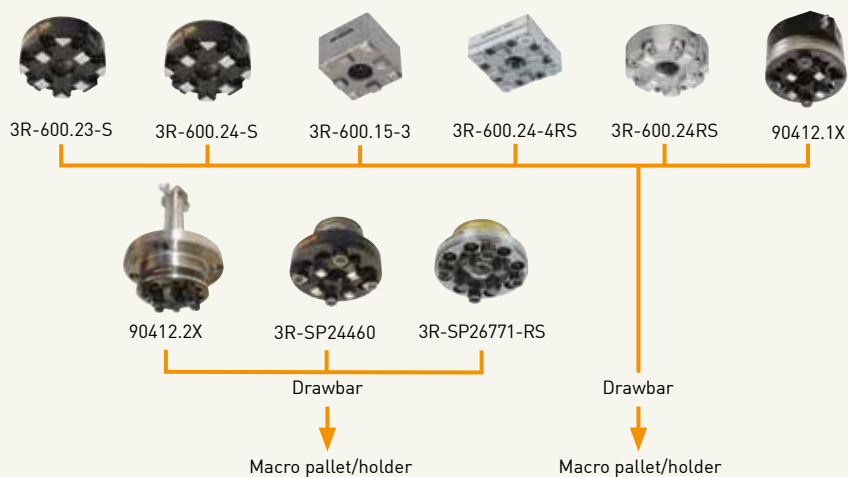


Macro – Chucks

Chucks	Article number	Drawbar	Feature
Manual Std	3R-600.24-S	3R-605.2	ground rear face
Manual Std	3R-600.28-S	3R-605.2	ground rear face
Pneumatic Std	3R-600.84-30	3R-605.1	machine-adapted
Pneumatic Std	3R-600.86-30	3R-605.1	machine-adapted
Pneumatic Std	3R-600.EX8	3R-605.1	machine-adapted



Chucks	Article number	Drawbar	Feature
Manual Std	3R-600.23-S	3R-605.2	Mounting flange, 6 Nm, Ø75 mm
Manual Std	3R-600.24-S	3R-605.2	Ground back face, 6 Nm, Ø75 mm
Pneumatic HP	3R-600.15-3	3R-605.2	Rust resistant, Ø 56 mm
Manual HP	3R-600.24-4RS	3R-605.2	Rust resistant, Ø 70 mm
Manual HP	3R-600.24RS	3R-605.1 / 3R-605.4	Rust resistant, Ø75 mm
Pneumatic Std	90412.1X	3R-605.1 / 3R-605.4	with swivel, low speed
Pneumatic HP	90412.2X	3R-605.1 / 3R-605.4	with swivel, low speed
Pneumatic Std	3R-SP24460	3R-605.1 / 3R-605.4	
Pneumatic HP	3R-SP26771-RS	3R-605.1 / 3R-605.4	rust-resistant

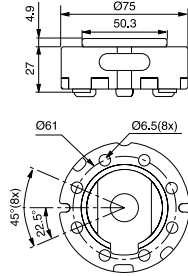


Macro – Chucks

Manual chuck, MacroStd, 3R-600.23-S

Cast chuck with mounting flange for mounting on the machine spindle or in a fixture.

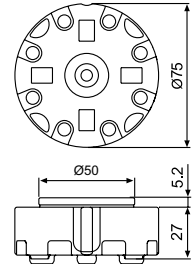
- Required drawbar 3R-605.2
- Tightening torque 6 Nm
- Fixed index positions 4x90°
- Flushing connection
- Weight 0.7 kg.



Manual chuck, MacroStd, 3R-SP15055

Cast chuck with ground flange for installation in fixture/plate.

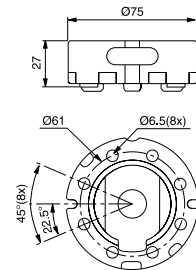
- Required drawbar 3R-605.2
- Tightening torque 6 Nm
- Fixed index positions 4x90°
- Flushing connection
- Weight 0.7 kg.



Manual chuck, MacroStd, 3R-600.24-S

Cast chuck with ground back face for mounting on the machine spindle with 3R-A11489 or in a fixture on the machine table.

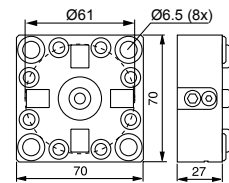
- Required drawbar 3R-605.2
- Tightening torque 6 Nm
- Fixed index positions 4x90°
- Flushing connection
- Weight 0.7 kg.



Manual chuck, MacroHP, 3R-600.24-4RS

Rust resistant chuck for Macro holder. Mounts on a suitable fixture.

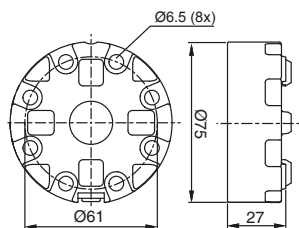
- Required drawbar 3R-605.2RS
- Tightening torque 6 Nm
- Fixed index positions 4x90°
- Grinded front edge
- Rust resistant
- Weight 1 kg.



Manual chuck, MacroHP, 3R-600.24RS

Rust resistant manual chuck designed for permanent mounting.

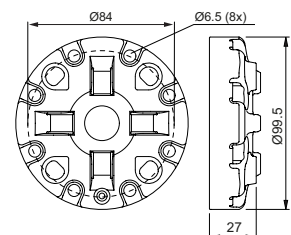
- Required drawbar 3R-605.2RS
- Tightening torque 6 Nm
- Fixed index positions 4x90°
- Clamping force 6000 N
- Rust resistant
- Weight 0.7 kg.



Manual chuck (low profile), MacroStd, 3R-600.28-S

Cast chuck with ground back face for mounting on the machine spindle. Also suitable in a fixture on the machine table or with adapterplate 3R-A26488.

- Required drawbar 3R-605.2
- Tightening torque 6 Nm
- Fixed index positions 4x90°
- Flushing connection
- Weight 1.1 kg.

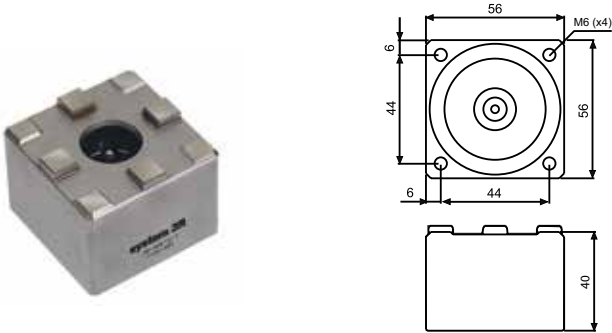


Macro – Chucks

Pneumatic chuck, MacroHP, 3R-600.15-3

Rust resistant pneumatic chuck for permanent mounting on the machine table.

- Drawbar 3R-605.2RS included
- Fixed index positions 4x90°
- Required air pressure 6±1 bar
- Rust resistant
- Weight 0.8 kg.



Pneumatic chuck, MacroStd, 90412.1X

Pneumatic added-on chuck with swivel surrounding unit.

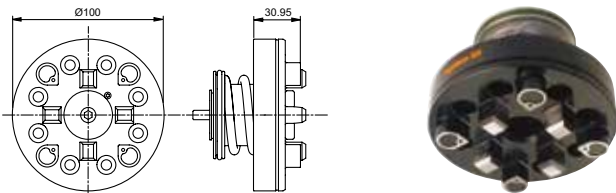
- For low RPM
- Machine adapted.



Pneumatic chuck, MacroStd, 3R-SP24460

Pneumatic chuck for building-in, for example in a fixture, dividing head or B-axis.

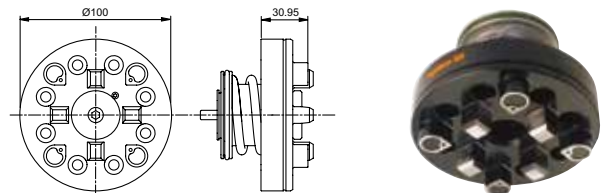
- Required drawbar 3R-605.1 or 3R-605.4
- Fixed index positions 4x90°
- Required air pressure 6±1 bar
- Air-blast cleaning of Z-references
- Turbo locking
- Weight 1.8 kg.



Pneumatic chuck, MacroStd, 3R-SP26771

Pneumatic chuck for building-in, for example on machine spindle or fixture.

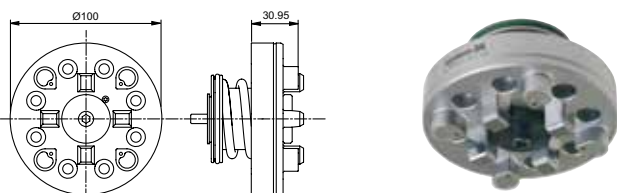
- Required drawbar 3R-605.1 or similar
- Fixed index positions 4x90°
- Carbide XY-references
- Required air pressure 6±1 bar
- Air-blast cleaning of Z-references
- Turbo locking
- Weight 2 kg.



Pneumatic chuck, MacroHP, 3R-SP26771-RS

Rust resistant pneumatic chuck for building-in, for example in a fixture, dividing head or B-axis.

- Required drawbar 3R-605.1RS
- Fixed index positions 4x90°
- Required air pressure 6±1 bar
- Carbide XY-references
- Air-blast cleaning of Z-references
- Turbo locking
- Rust resistant
- Weight 1.8 kg.



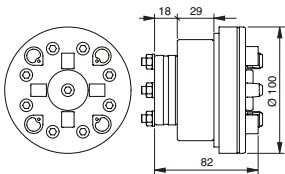
Macro – Chucks



Pneumatic chuck, MacroHP, 3R-600.84-3

Pneumatic chuck for permanent mounting in the machine spindle.

- Required drawbar 3R-605.1
- Fixed index positions 4x90°.
- Required air pressure 6±1 bar.
- Four M6 clearance holes, Ø 45 mm
- Air-blast cleaning of Z-references.
- Flushing connection
- Turbo locking.
- Carbide XY-References
- Weight 2.4 kg.

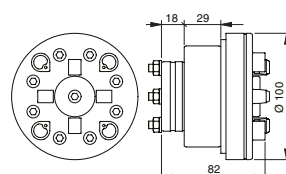


Pneumatic chuck, MacroStd, 3R-600.84-30

Pneumatic chuck for permanent mounting in the machine spindle.

Note: X/Y/Z references of hardened and ground steel, larger Z-references. Note: When ordering state machine make and type.

- Required drawbar 3R-605.1
- Required air pressure 6±1 bar
- Fixed index positions 4x90°
- Four M6 clearance holes, Ø 45 mm
- Air-blast cleaning of the Z-references
- Flushing connection
- Turbo locking
- Weight 2.4 kg.



Macro – Chucks

Pneumatic chuck, MacroHP, 90412.2X

Pneumatic built-in chuck with swivel in the back.

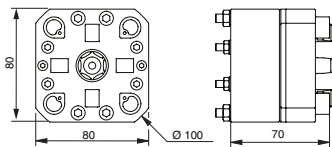
- For high RPM
- Machine adapted.



Pneumatic chuck, MacroHP, 3R-600.86-3

Pneumatic chuck for permanent mounting in the machine spindle.

- Required drawbar 3R-605.1
- Required air pressure 6 ± 1 bar.
- Fixed index positions $4 \times 90^\circ$.
- Air-blast cleaning of Z-references.
- Turbo locking.
- Carbide XY-References
- Weight 1.8 kg.

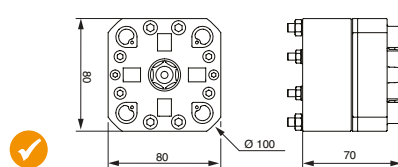


Pneumatic chuck, MacroStd, 3R-600.86-30

Pneumatic chuck for permanent mounting in the machine spindle.

Note: When ordering state machine make and type. Note: X/Y/Z references of hardened and ground steel, larger Z-references.

- Required drawbar 3R-605.1
- Required air pressure 6 ± 1 bar
- Fixed index positions $4 \times 90^\circ$
- Four M6 clearance holes, 67×20 mm and four M5 clearance holes, 63×26 mm
- Air-blast cleaning of the Z-references
- Flushing connection
- Turbo locking
- Weight 1.8 kg.

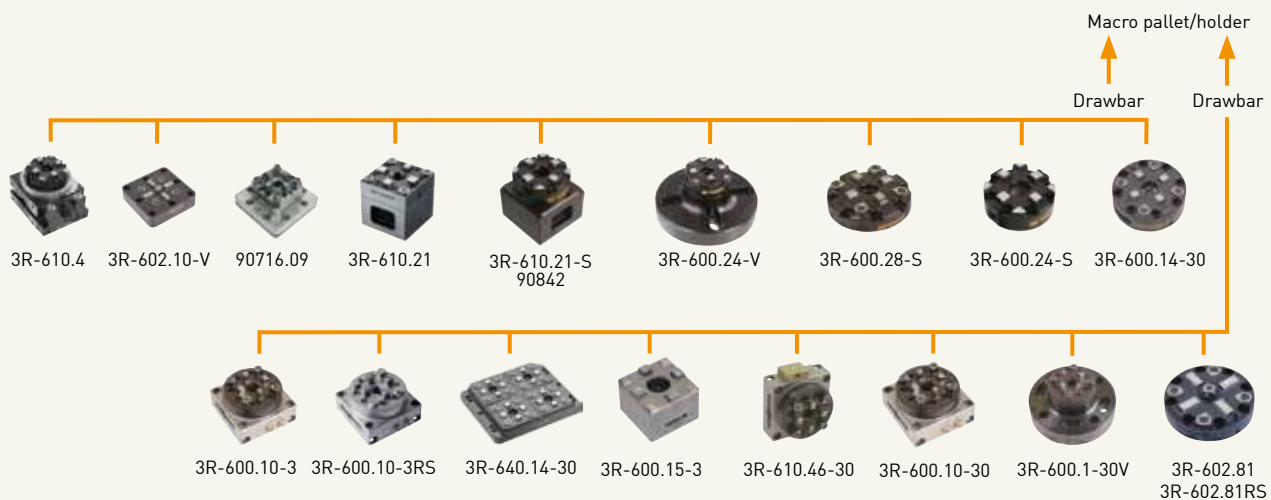


Macro – Chucks

Lathe chucks	Article number	Drawbar	Feature
Manual Std	3R-600.22	3R-605.2	Mounting flange
Manual HP	3R-600.20	3R-605.1 / 3R-605.4	Carbide references, 4 Nm
Pneumatic Std	3R-600.1-30	3R-605.1 / 3R-605.4	



Table chucks	Article number	Drawbar	Feature
Manual Std	3R-610.21	3R-605.2	horizontal and vertical, 6 Nm
Manual Std	3R-610.21-S	3R-605.2	horizontal and vertical, 6 Nm
Manual Std	90842	3R-605.1	horizontal and vertical, 6 Nm
Manual VDP	3R-600.24-V	3R-605.2	vibration-damped, 6 Nm, Ø75 mm
Manual Std	3R-600.28-S	3R-605.2	low profile, 6 Nm, Ø100 mm
Manual Std	3R-600.24-S	3R-605.2	6 Nm, Ø75 mm
Pneumatic Std	3R-610.46-30	3R-605.1 / 3R-605.4	horizontal and vertical
Pneumatic HP	3R-600.15-3	3R-605.2RS	rust resistant
Pneumatic Std	3R-600.10-30	3R-605.1 / 3R-605.4	
Pneumatic HP	3R-600.10-3	3R-605.1 / 3R-605.4	
Pneumatic HP	3R-600.10-3RS	3R-605.1RS	rust resistant
Pneumatic Std	3R-600.14-30	3R-605.2	low profile
Pneumatic HP	3R-610.19	3R-605.1 / 3R-605.4	horizontal and vertical. 3Rrefix Ø20
Pneumatic VDP	3R-600.1-30V	3R-605.1 / 3R-605.4	vibration-damped
Pneumatic Std	3R-602.81	3R-605.10	low profile
Pneumatic HP	3R-602.81RS	3R-605.10	low profile, rust-resistant
Pneumatic Std	3R-610.4	3R-605.2	horizontal and vertical, vernier scale
Pneumatic VDP	3R-602.10-V	3R-605.2	vibration-damped
Pneumatic VDP	90716.09	3R-605.1 / 3R-605.4	vibration-damped
Pneumatic Std	3R-640.14-30	3R-605.2	4 Macro chucks

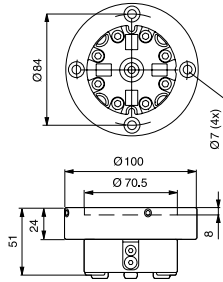


Macro – Chucks

Manual lathe chuck, MacroStd, 3R-600.22

With setting screws for centring.

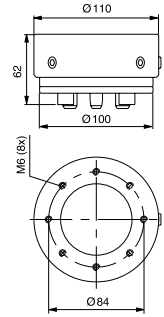
- Required drawbar 3R-605.2
- Tightening torque 6 Nm
- Fixed index positions 4x90°
- Weight 2.1 kg.



Manual chuck, MacroHP, 3R-600.20

For mounting on the machine spindle with 3R-A3620 or on a lathe taper with centring ring 3R-612.6.

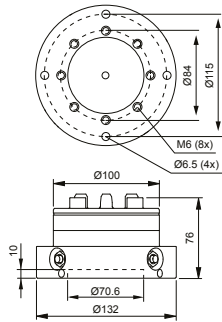
- Required drawbar 3R-605.1 or 3R-605.4
- Tightening torque 4 Nm
- Fixed index positions 4x90°
- Carbide XY references
- Weight 3.6 kg.



Pneumatic chuck, MacroStd, 3R-600.1-30

Pneumatic chuck for permanent mounting on the machine spindle or onto the machine table.

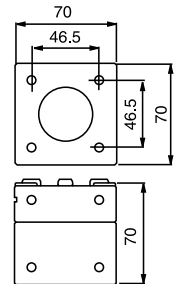
- Required drawbar 3R-605.1
- Fixed index positions 4x90°
- Turbo locking
- Weight 4 kg.



Manual chuck, MacroStd, 3R-610.21

Three ground faces for vertical or horizontal mounting on the machine table.

- Required drawbar 3R-605.2
- Tightening torque 6 Nm
- Fixed index positions 4x90°
- Flushing duct
- Weight 2.2 kg.



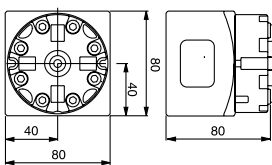
Manual chuck, MacroStd, 3R-610.21-S

Two ground faces for vertical or horizontal mounting on the machine table.

- Required drawbar 3R-605.2
- Tightening torque 6 Nm
- Fixed index positions 4x90°
- Flushing duct
- Weight 3.5 kg

90842

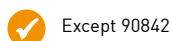
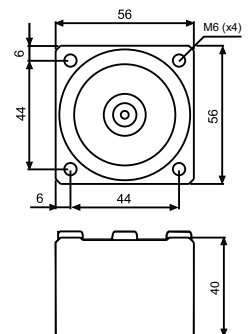
- Required drawbar 3R-605.1, otherwise as 3R-610.21-S.



Pneumatic chuck, MacroHP, 3R-600.15-3

Pneumatic chuck for permanent mounting on the machine table.

- Drawbar 3R-605.2RS included
- Fixed index positions 4x90°
- Required air pressure 6±1 bar
- Rust resistant
- Weight 0.8 kg.

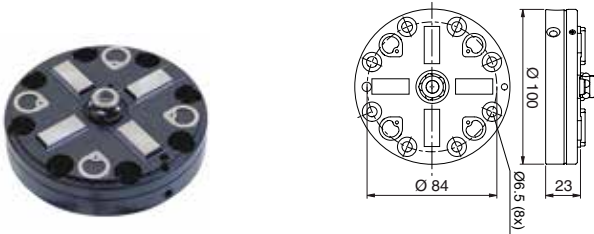


Macro – Chucks

Pneumatic chuck (low profile), MacroStd, 3R-602.81

Pneumatic chuck for permanent mounting on the machine table.

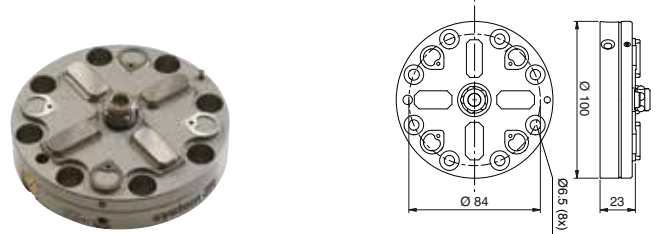
- Required drawbar 3R-605.10
- Required air pressure 6 ± 1 bar
- Fixed index positions $4 \times 90^\circ$
- Weight 1 kg.



Pneumatic chuck (low profile), MacroHP, 3R-602.81RS

Pneumatic chuck for permanent mounting on the machine table.

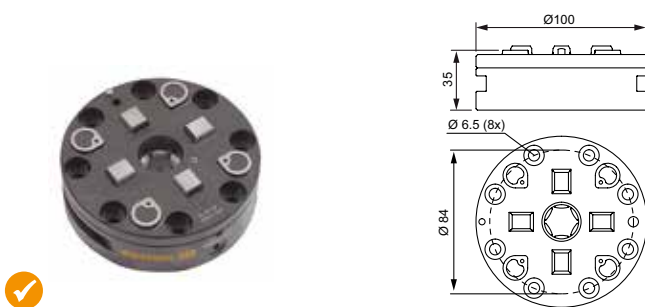
- Required drawbar 3R-605.10
- Clamping force 6000 N
- Fixed index positions $4 \times 90^\circ$
- Air-blast cleaning of Z-references
- Rust resistant
- Weight 1 kg.



Pneumatic chuck (low profile), MacroStd, 3R-600.14-30

Pneumatic chuck for permanent mounting on the machine table.

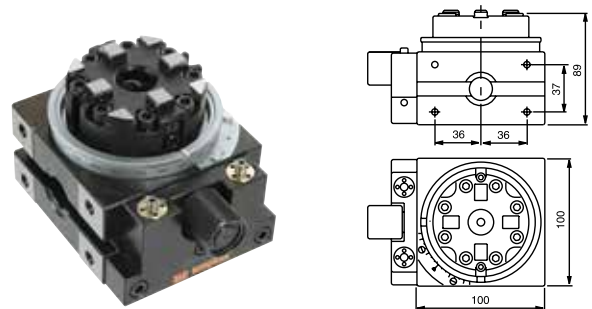
- Required drawbar 3R-605.2
- Required air pressure 6 ± 1 bar
- Fixed index positions $4 \times 90^\circ$
- Weight 2 kg.



Manual 3R block, MacroStd, 3R-610.4

For vertical or horizontal mounting on the machine table.

- Required drawbar 3R-605.2
- Fixed index positions $24 \times 15^\circ$
- Vernier scale
- Weight 5.5 kg.

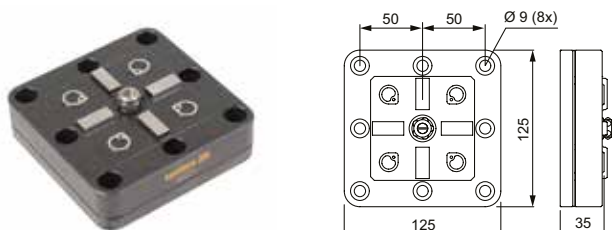


Pneumatic chuck, VDP, 3R-602.10-V

Pneumatic vibration-damped chuck, low-profile version for permanent mounting on the machine table.

- Required drawbar 3R-605.10
- Required air pressure 6 ± 1 bar
- Fixed index positions $4 \times 90^\circ$
- Air-blast cleaning of the Z-references
- Turbo locking.

VDP®

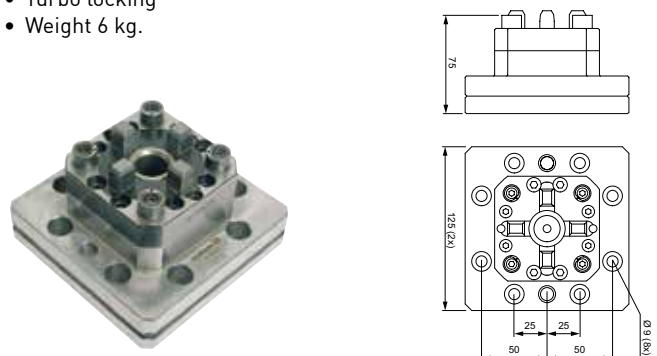


Pneumatic chuck, VDP, 90716.09

Pneumatic vibration-damped chuck for permanent mounting on the machine table.

- Required drawbar 3R-605.1 or 3R-605.4
- Required air pressure 6 ± 1 bar
- Fixed index positions $4 \times 90^\circ$
- Air-blast cleaning of the Z-references
- Turbo locking
- Weight 6 kg.

VDP®

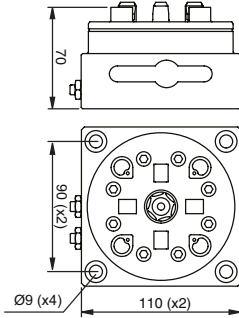


Macro – Chucks

Pneumatic chuck, MacroHP, 3R-600.10-3

Pneumatic chuck locked/opened with air gun.

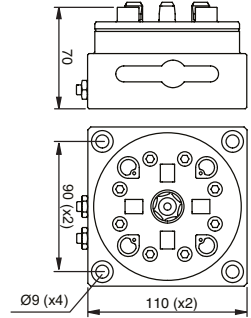
- Required drawbar 3R-605.1 or 3R-605.4
- Required air pressure 6 ± 1 bar
- Fixed index positions $4 \times 90^\circ$
- Air-blast cleaning of the Z-references
- Carbide XY-References
- Turbo locking
- Weight 4.4 kg.



Pneumatic chuck, MacroHP, 3R-600.10-3RS

Pneumatic chuck locked/opened with air gun.

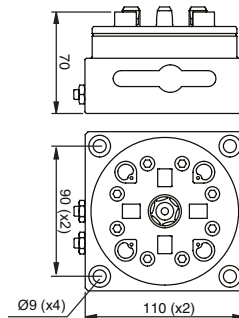
- Required drawbar 3R-605.1RS
- Required air pressure 6 ± 1 bar
- Fixed index positions $4 \times 90^\circ$
- Air-blast cleaning of the Z-references
- Carbide XY-References
- Turbo locking
- Rust resistant
- Weight 4.4 kg.



Pneumatic chuck, MacroStd, 3R-600.10-30

Pneumatic chuck locked/opened with air gun.

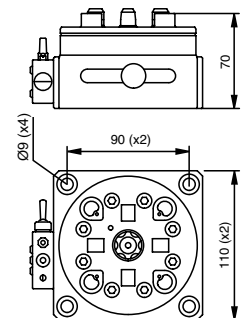
- Required drawbar 3R-605.1 or 3R-605.4
- All references of hardened and ground steel
- Required air pressure 6 ± 1 bar
- Fixed index positions $4 \times 90^\circ$
- Air-blast cleaning of the Z-references
- Turbo locking
- Weight 4.4 kg.



Pneumatic chuck, MacroStd, 3R-610.46-30

Pneumatic chuck for horizontal or vertical use.

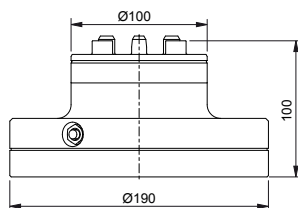
- Required drawbar 3R-605.1 or 3R-605.4
- Required air pressure 6 ± 1 bar
- Fixed index positions $4 \times 90^\circ$
- Air unit included
- Weight 4.4 kg.



Pneumatic chuck, VDP, 3R-600.1-30V

Pneumatic vibration-damped chuck.

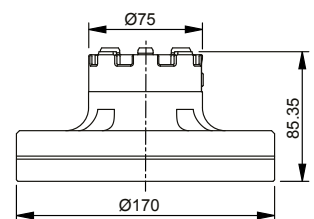
- Required drawbar 3R-605.1 or 3R-605.4
- Required air pressure 6 ± 1 bar
- Fixed index positions $4 \times 90^\circ$
- Air-blast cleaning of the Z-references
- Turbo locking
- Weight 6 kg.



Manual chuck, VDP, 3R-600.24-V

Manual vibration-damped chuck, Ø170 mm.

- Required drawbar 3R-605.2
- Tightening torque 6 Nm
- Building-in height 85 mm.
- Centre spacing 63 to 100 mm
- Weight 6 kg.



Macro – Chucks

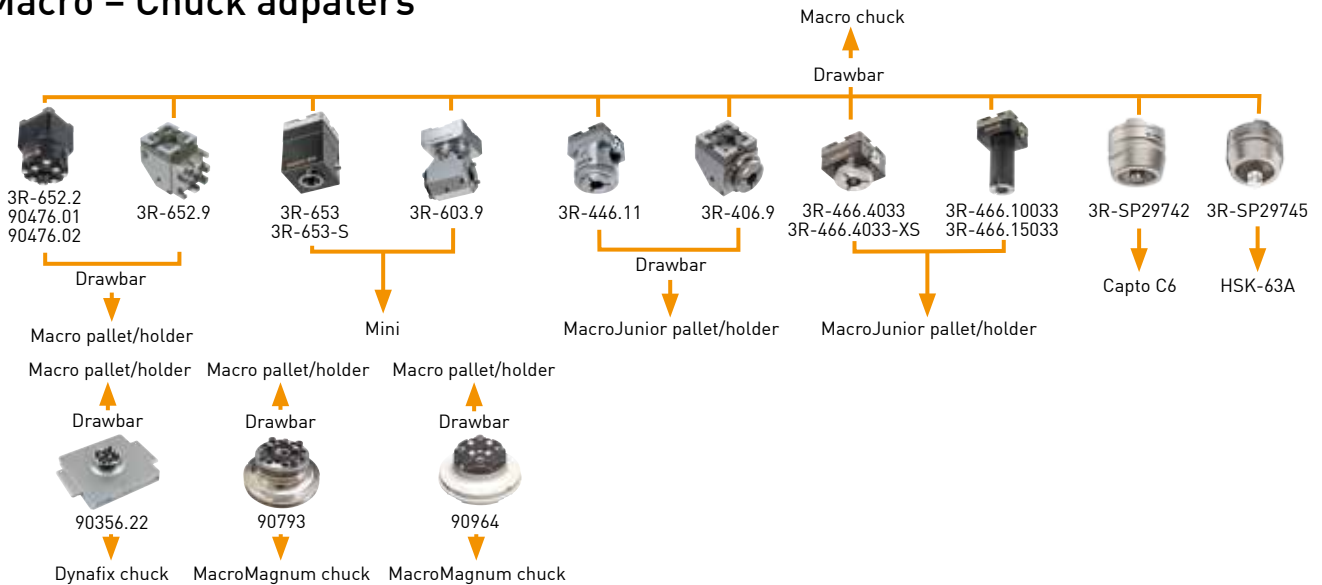
Pneumatic chuck, Macro Quad, 3R-640.14-30

For permanent mounting on the machine table. All connections from the side or back of the chuck.

- Required drawbar 3R-605.2 or similar
- Required air pressure 6±1 bar
- Fixed index positions 4x90°
- Permissible torque 135 mm
- Air-blast cleaning of the Z-references
- Solid X & Y-references
- Turbo locking
- Weight 10 kg.



Macro – Chuck adapters



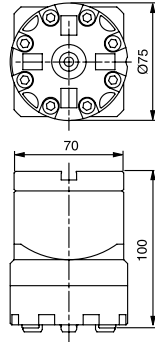
Chuck adapters	Article number	Drawbar	Feature
Manual	3R-652.2	3R-605.2	100 mm
Manual	3R-652.9	-	90°. Locking screw with M6 drawpin
Manual	3R-653	-	Macro ► Mini, rust resistant
Manual	3R-653-S	-	Macro ► Mini
Manual	3R-603.9	-	Macro ► Mini 90°, rust resistant
Manual	3R-446.11	3R-405.11	Macro ► MacroJunior
Manual	3R-466.4033	-	Macro ► MacroJunior. locking screw
Manual	3R-466.4033-S	-	Macro ► MacroJunior. locking screw
Manual	3R-406.9	-	Macro ► MacroJunior 90°. locking screw
Manual	3R-466.10033	-	Macro ► MacroJunior 100 mm. locking screw
Manual	3R-466.15033	-	Macro ► MacroJunior 150 mm. locking screw
Manual	3R-SP29742	-	Macro ► Capto C6, rust resistant
Manual	3R-SP29745	-	Macro ► HSK-63A, rust resistant
Pneumatic	90356.22	3R-605.1 / 3R-605.4	Dynafix ► Macro
Pneumatic	90793	3R-605.1 / 3R-605.4	MacroMagnum ► Macro
Manual	90964	3R-605.2	MacroMagnum ► Macro

Macro – Chuck adapters

Manual chuck adapter, Macro-Macro, 3R-652.2

Distance adapter to extend the macro spindle. Mechanical clamping from the side.

- Required drawbar 3R-605.2
- Solid X & Y-references
- Height 100 mm
- Adapted for automatic changing
- Flushing duct
- Recommended clamping torque 6 Nm
- Permissible torque: 135 Nm
- Weight 4.5 kg.



Manual chuck adapter, Macro-Macro, 90476.01

Distance adapter to extend the macro spindle. Mechanical clamping from the side.

- Required drawbar 3R-605.2
- Solid X & Y-references
- Height 200 mm
- Adapted for automatic changing
- Flushing duct
- Recommended clamping torque 6 Nm
- Permissible torque: 135 Nm
- Weight 8 kg.



Manual chuck adapter, Macro-Macro, 90476.02

Distance adapter to extend the macro spindle. Mechanical clamping from the side.

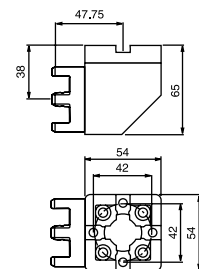
- Required drawbar 3R-605.2
- Solid X & Y-references
- Height 250 mm
- Adapted for automatic changing
- Flushing duct
- Recommended clamping torque 6 Nm
- Permissible torque: 135 Nm
- Weight 9 kg.



Manual chuck adapter 90°, Macro-Macro, 3R-652.9

For horizontal mounting of Macro holders. Supplied with drawbar for screw locking.

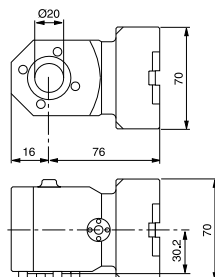
- Rust resistant
- Weight 2.4 kg.



Manual chuck adapter 90°, Macro-Mini, 3R-603.9

For horizontal mounting of Mini holders in the Macro system.

- Rust resistant
- Flushing connection
- Weight 1.9 kg.

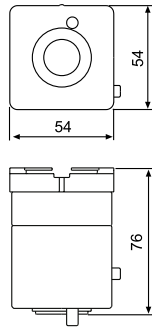


Macro – Chuck adapters

Manual chuck adapter, Macro-Mini, 3R-653-S

For mounting Mini holders in the Macro system.

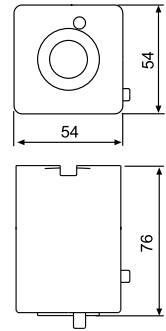
- MacroStandard coupling
- Can be changed automatically
- Weight 1.3 kg.



Manual chuck adapter, Macro-Mini, 3R-653

For mounting Mini holders in the Macro system.

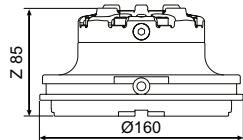
- MacroHP coupling
- Can be changed automatically
- Rust-resistant
- Weight 1.3 kg.



Manual chuck adapter, MacroMagnum-Macro, 90964

From MacroMagnum into Macro system. Chuck adapter with built-in Macro chuck.

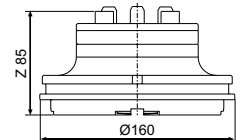
- Requires drawbar 3R-605.2 or similar.
- Solid X & Y-References
- Recommended clamping torque 6 Nm
- Permissible torque 135 Nm
- Clamping force 6000 N
- Max load 50 kg to acquire accuracy 0.002 mm
- Weight 4.3 kg.



Pneumatic chuck adapter, MacroMagnum-Macro, 3R-682.600-A

Chuck adapter with built-in pneumatic Macro chuck for mounting in 3R-680.10-2A.

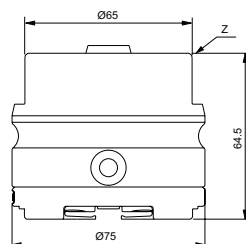
- Weight 4.5 kg.



Manual adapter, Macro-Capto C6, 3R-SP29742

Access to clamping from underneath. Torque wrench for optimal performance.

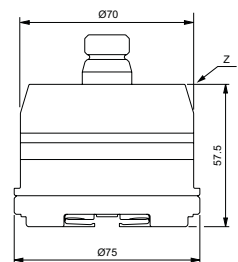
- Suitable for automatic changer.
- Recommended clamping torque 30 Nm
- Rust-resistant
- Weight 1.5 kg.



Manual adapter, Macro-HSK-63A, 3R-SP29745

Access to clamping from underneath. Torque wrench for optimal performance.

- Suitable for automatic changer.
- Recommended clamping torque 30 Nm
- Rust-resistant
- Weight 1.5 kg.

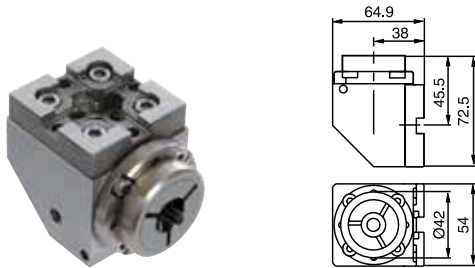


Macro – Chuck adapters

Manual chuck adapter 90°, Macro-MacroJunior, 3R-406.9

For horizontal mounting of MacroJunior holders in the Macro system. Screw locking.

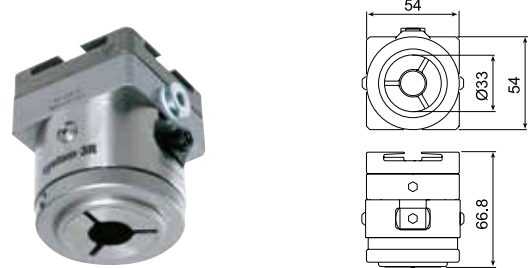
- Adapted for automatic changing
- Rust-resistant
- Fixed index positions 3x120°
- Weight 2.4 kg.



Manual chuck adapter, Macro-MacroJunior, 3R-446.11

For mounting in the Macro system. Side locking of the MacroJunior holder. Duct for flushing through the electrode.

- Required drawbar 3R-405.11
- Precision-cast Macro reference element
- Adapted for automatic changing
- Fixed index positions 3x120°
- Weight 1.3 kg.



Manual chuck adapters, Macro-MacroJunior

For mounting in the Macro system. Axial locking screw with channel for flushing through the electrode.

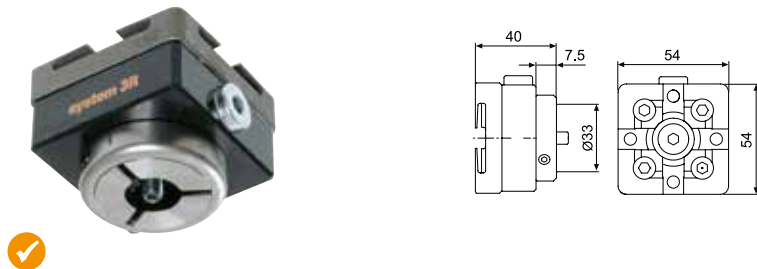
3R-466.4033

- Precision-cast Macro reference element
- Adapted for automatic changing
- Fixed index positions 3x120°
- Weight 1.1 kg.

3R-466.4033-S

Note: For EDM machining only.

- Adapted for automatic changing
- Fixed index positions 3x120°
- Weight 1 kg.



Macro – Chuck adapters & Rotating spindles

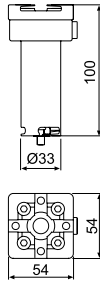
Manual chuck adapters, Macro-MacroJunior

For mounting in the Macro system. Axial locking screw with channel for flushing through the electrode.

Note: For EDM machining only.

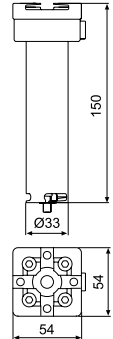
3R-466.10033

- Fixed index positions 3x120°
- Adapted for automatic changing
- Height 100 mm
- Weight 0.8 kg.



3R-466.15033

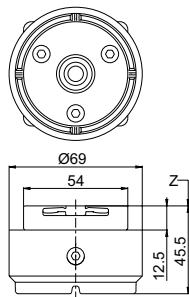
- Fixed index positions 3x120°
- Adapted for automatic changing
- Height 150 mm
- Weight 1.2 kg.



Manual chuck adapter, Macro-GPS 70, C 188 550

Adaption of Macro on GPS 70.

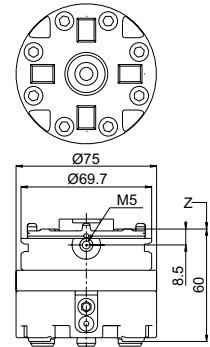
- Required drawbar N 901 800
- Built-up height 45.5 mm
- Tightening torque 2.8 Nm
- Weight 1 kg.



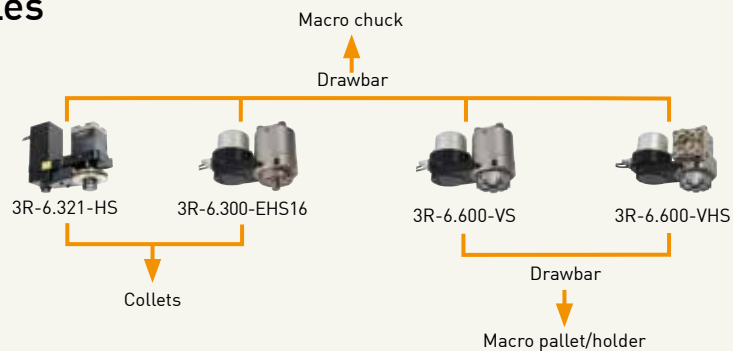
Manual chuck adapter, GPS 70-Macro, C 188 560

Adaption of GPS 70 on Macro.

- Required drawbar 3R-605.2
- Built-up height 60 mm
- Weight 1.9 kg.



Macro – Rotating spindles



Rotating spindles	Article number	Drawbar	Feature
Vertical standard	3R-6.321-HS	-	collets
Vertical standard	3R-6.600-VS	3R-605.2	rust resistant
Vertical and horizontal standard	3R-6.600-VHS	3R-605.2	rust resistant
Vertical standard	3R-6.300-EHS16	-	collets, ER-16, rust-resistant

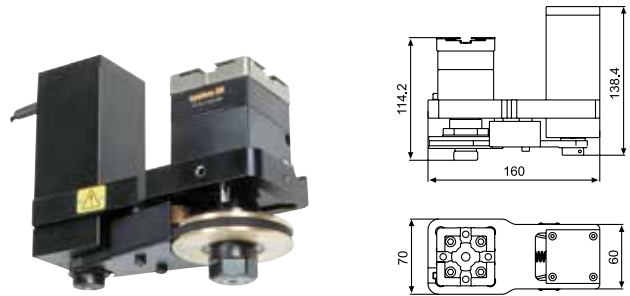
Macro – Rotating spindles



Rotating spindle, 3R-6.321-HS

Electrical spindle for round electrodes.

- Supplied with collet chuck set 3R-ER16E
- Electrode sizes Ø0.5-10 mm
- Speed range 200-2000 rev/min
- Recommended maximum flushing pressure 40 bar
- Weight 4.9 kg.



Rotating spindles

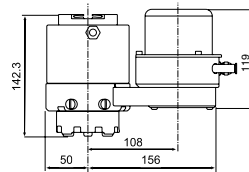
For mounting in a Macro chuck. Flushing via flushing connection.

- Control unit included
- Required drawbar 3R-605.2, but 3R-605.2RS in wire EDM machines
- Rust-resistant
- Immersible
- Maximum electrode weight 5 kg
- Maximal flushing pressure through the chuck: 40 bar
- Weight 9.5 kg.

3R-6.600-VS

For vertical mounting in EDM machines.

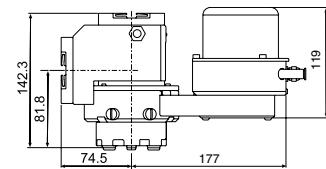
- Speed range 60-2000 rev/min.



3R-6.600-VHS

For vertical mounting in die-sinking EDM machines and horizontal mounting in wire EDM machines.

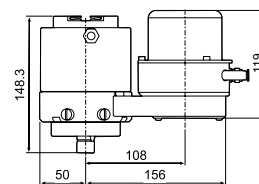
- Speed range 60-1500 rev/min.



Rotating spindles, 3R-6.300-EHS16

For clamping in a vertical Macro chuck. Flushing via flushing connection.

- Drawbar depends on chosen chuck
- Control unit included
- Rust-resistant
- Immersible
- Speed range 60-2000 rev/min
- Maximum flushing pressure 80 bar
- Weight 10 kg.

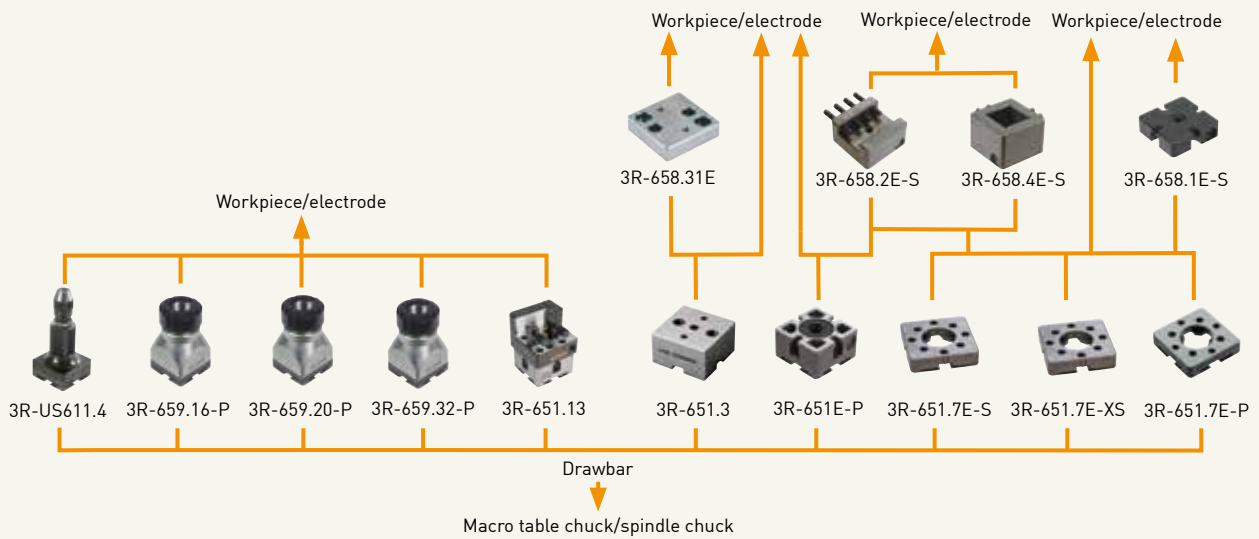


Recommended collet sets

Make	Collet set	Size (mm)	Nut M19x1
Balzer	EHS16	Ø0.09-3	Integral
Regofix	ER16, ER16-UP	Ø0.5-10	ERM16, ERM16, ER16 MS
Tecnopinz	ETS16	Ø1.25-10	ETS16,2



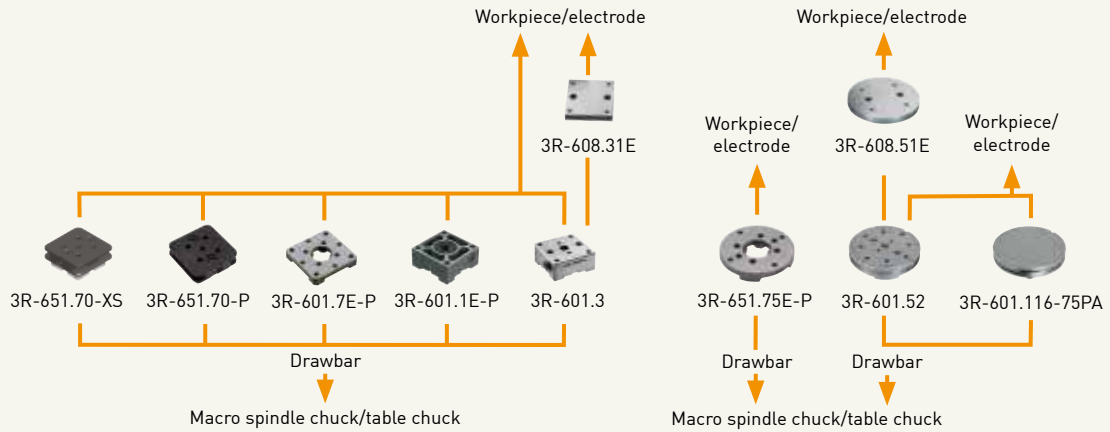
Macro – Pallets, holders & reference elements



Holders, pallets and ref. element, 54x54 mm	Article number	Feature
Hardened reference element 12.5 mm, HP	3R-651.7E-P	rust-resistant
Hardened reference element 12.5 mm, Std	3R-651.7E-XS	
Hardened reference element 12.5 mm, Std	3R-651.7E-S	surface-treated
Hardened pallet 30 mm, HP	3R-651E-P	rust-resistant
Hardened pallet 30 mm, HP	3R-651.3	52x52 mm / 3Refix Ø10, rust resistant
Unhardened pallet 14.4 mm	3R-658.31E	52x52 mm / 3Refix Ø10
Hardened holder, HP	3R-651.13	<30x30 mm
Unhardened holder	3R-658.4E-S	<30x30 mm
Unhardened holder	3R-658.2E-S	<30 mm
Spacer plate, Std and HP	3R-658.1E-S	
Collet chuck ER16, HP	3R-659.16-P	Ø0,5-10 mm, rust resistant
Collet chuck ER20, HP	3R-659.20-P	Ø1-13 mm, rust resistant
Collet chuck ER32, HP	3R-659.32-P	Ø2-20 mm, rust resistant
Three-jaw chuck	3R-US611.4	



Macro – Pallets & reference elements



Pallets and ref. elements, 70x70 mm

	Article number	Feature
Hardened reference element 12.5 mm, HP	3R-601.7E-P	rust resistant
Hardened pallet 30 mm, HP	3R-601.1E-P	rust resistant
Hardened pallet 30 mm, HP	3R-601.3	rust resistant. 3Refix Ø10
Unhardened pallet 14.2 mm	3R-608.31E	3Refix Ø10
Unhardened pallet, HP	3R-651.70-P	reference element 54x54 mm
Unhardened pallet, Std	3R-651.70-XS	reference element 54x54 mm

Ref.element, Ø75 mm

Hardened reference element 12.5 mm standard and HP	3R-651.75E-P	rust resistant
--	--------------	----------------

Pallets, Ø116 mm

	Article number	Feature
Hardened pallet, HP	3R-601.52	3Refix Ø10 mm, rust-resistant
Unhardened pallet, HP	3R-601.116-75PA	With reference element Ø75 mm
Unhardened pallet	3R-608.51E	3Refix Ø10 mm



Macro – Pallets, reference elements & spacers

Reference element 54x54 mm, MacroStd

Hardened reference element for copper electrodes and workpieces.

Note: Must be mounted on the copper blank/workpiece before it is locked in a chuck.

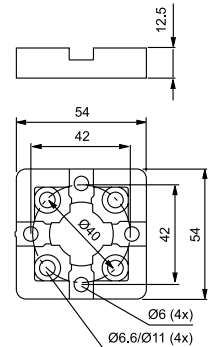
Note: For graphite electrodes, spacer plate 3R-658.1E-S is required.

3R-651.7E-S

- Nickel-plated side faces
- Supplied in sets of 8
- Weight per set 1.3 kg

3R-651.7E-XS

- Untreated side faces
- Supplied in sets of 8
- Weight per set 1.3 kg

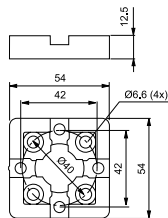


Reference element 54x54 mm, MacroHP, 3R-651.7E-P

Hardened and precision-cast, with clearance holes for four fixing screws.

Note: Must be mounted on the workpiece/fixture before it is locked in a chuck.

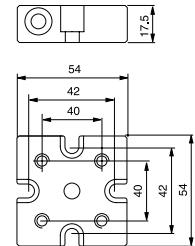
- Parallel-ground top and bottom faces
- Fixed index positions 4x90°
- Rust resistant
- Supplied in sets of 8
- Weight per set 1.3 kg



Spacer plate, 54x54 mm, 3R-658.1E-S

For graphite electrodes or copper electrodes/workpieces with a rough mounting surface. To be mounted on 3R-651.7E-S, 3R-651.7E-XS or 3R-651.7E-P.

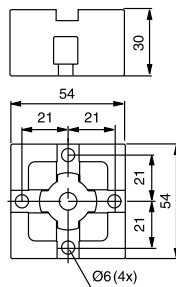
- Ready for code carrier
- Supplied in sets of 8
- Weight per set 2.5 kg.



Pallet, 54x54 mm, MacroHP, 3R-651E-P

Hardened, with clearance holes for four fixing screws.

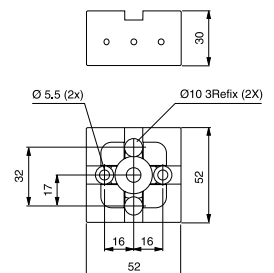
- Ready for code carrier
- Fixed index positions 4x90°
- Rust resistant
- Flushing duct
- Supplied in sets of 8
- Weight per set 3.4 kg.



Pallet, 52x52 mm, MacroHP, 3R-651.3

Hardened, with 3Refix holes, flushing connection and clearance holes for two fixing screws.

- 3Refix Ø10 mm
- Ready for code carrier
- Parallel-ground top and bottom faces
- Fixed index positions 4x90°
- Rust resistant
- Flushing duct
- Weight 0.5 kg.

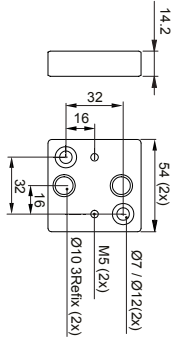


Macro – Pallets & holders

Pallet, 52x52 mm, 3R-658.31E

Unhardened with 3Refix holes and two M5 threads. Designed to be mounted on 3R-651.3.

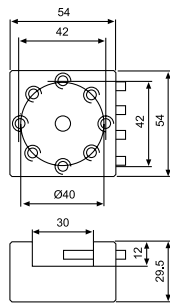
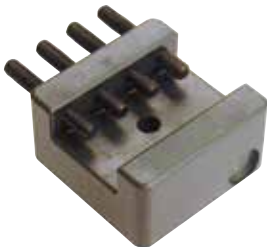
- 3Refix Ø10 mm
- Building-in height 14.4 mm
- Supplied in sets of 10
- Weight per set 2.2 kg.



Holder, 54x54 mm, 3R-658.2E-S

Unhardened holder for flat electrodes with maximum width 30 mm. To be mounted on 3R-651.7E-S or 3R-651.7E-XS.

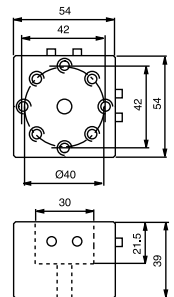
- Ready for code carrier
- Flushing duct
- Supplied in sets of 8
- Weight per set 3.5 kg.



Holder, 54x54 mm, 3R-658.4E-S

Unhardened holder for square or round electrodes, max 30 mm. To be mounted on 3R-651.7E-S, 3R-651.7E-XS or 3R-651.7E-P.

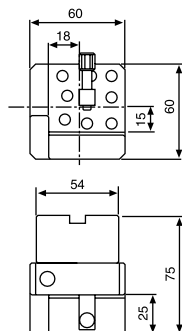
- Ready for code carrier
- Flushing duct
- Supplied in sets of 8
- Weight per set 5.5 kg.



Holder, MacroHP, 3R-651.13

Hardened holder for square electrodes max 30 mm.

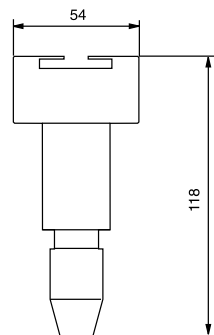
- Max. workpiece 32x28 mm
- Ready for code carrier
- Parallel-ground top and bottom faces
- Fixed index positions 4x90°
- Flushing connection
- Weight 1.2 kg.



Three-jaw chuck, 3R-US611.4

For 0-3 mm electrodes.

- Weight 0.8 kg.

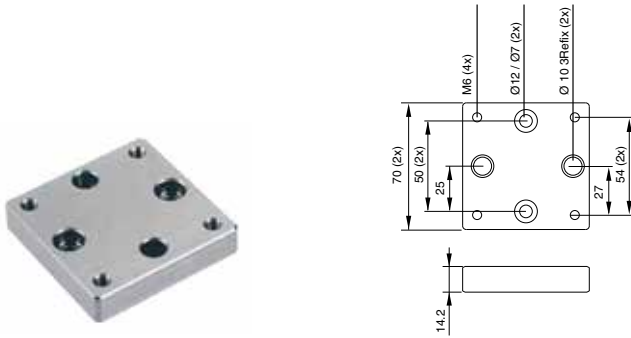


Macro – Pallets & reference elements

Pallet, 70x70 mm, 3R-608.31E

Unhardened with 3Refix holes and four M6 threads. Designed to be mounted on 3R-601.3 or 3R-601.52.

- 3Refix Ø10 mm
- Building-in height 14.2 mm
- Supplied in sets of 10
- Weight per set 4.4 kg.

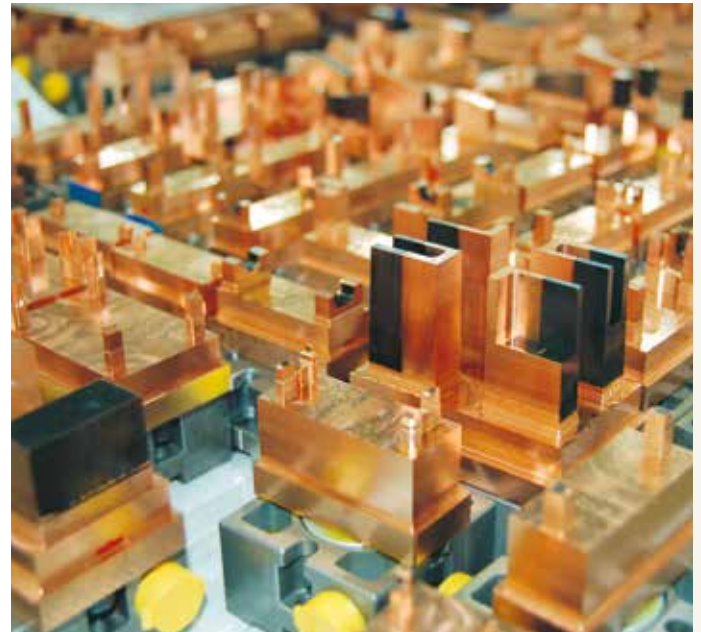
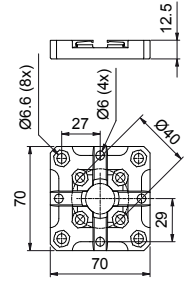
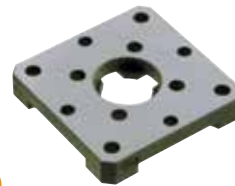


Reference element, 70x70 mm, MacroHP, 3R-601.7E-P

Hardened and precision-cast, with clearance holes for four fixing screws.

Note: Must be mounted on the workpiece/fixture before it is locked in a chuck.

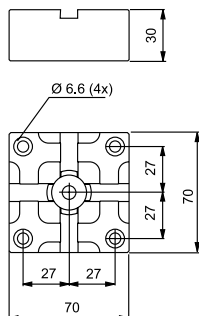
- Parallel-ground top and bottom faces
- Fixed index positions 4x90°
- Rust resistant
- Supplied in sets of 5
- Weight per set 3 kg.



Pallet, 70x70 mm, MacroHP, 3R-601.1E-P

Hardened, with clearance holes for four fixing screws.

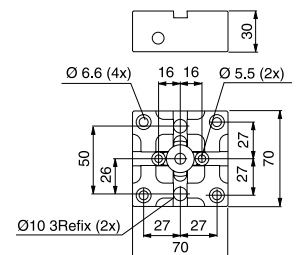
- Ready for code carrier
- Fixed index positions 4x90°
- Rust resistant
- Flushing duct
- Supplied in sets of 5
- Weight per set 3.2 kg.



Pallet, 70x70 mm, MacroHP, 3R-601.3

Hardened with 3Refix holes, flushing connection and clearance holes for six fixing screws.

- 3Refix Ø10 mm
- Ready for code carrier
- Parallel-ground top and bottom faces
- Fixed index positions 4x90°
- Rust resistant
- Flushing duct
- Weight 1 kg.



Macro – Pallets, reference elements & accessories

PT Pallet, 70x70 mm, 3R-651.70-P

Unhardened pallet with reference element 3R-651.7-P.

- Ready for code carrier
- Ready for automation
- Gripp outside the pallet
- Sealing ring between pallet and chuck
- Weight 1 kg.

PT Pallet, 70x70 mm, 3R-651.70-XS

Unhardened pallet with reference element 3R-651.7-XS.

- X, Y & Z-references hardened
- Ready for code carrier
- Ready for automation
- Gripp outside the pallet
- Sealing ring between pallet and chuck
- Weight 1 kg.



PT



PT

PT = Process Tooling

Accessories:

PT Sealing ring, High, 3R-612.54-A

Suitable for some Macro chucks with drawbar 3R-605.1*.



PT

PT Sealing ring, Low, 3R-612.54-S

Suitable for some Macro chucks with drawbar 3R-605.2*.



PT

*For more info please ask System 3R.



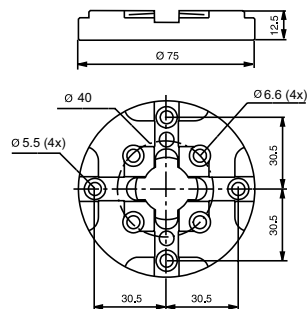
Application example.

Reference element, Ø75 mm, 3R-651.75E-P

Hardened and milled with clearance holes for eight fixing screws.

Note: Must be mounted on the workpiece/fixture before it is locked in a chuck.

- Fixed index positions 4x90°
- Parallel-ground top and bottom faces
- Rust resistant
- Supplied in sets of 10 pcs.
- Weight per set 2.7 kg.



Collet chucks, MacroHP

3R-659.16-P

- For collets ER16
- Electrode size 0.5-10 mm
- Flushing duct
- Building-in height 62 mm
- Weight 0.8 kg.

3R-659.32-P

- For collets ER32
- Electrode size 2-20 mm
- Flushing duct
- Building-in height 94 mm
- Weight 1.2 kg.

3R-659.20-P

- For collets ER20
- Electrode size 1-13 mm
- Flushing duct
- Building-in height 69 mm
- Weight 1.2 kg.



Gate chuck, 3R-US90-601

Fixed index positions at 0, 30, 45, 60 and 90 degrees. Other angles are set with a sine rule.

- Weight 1.1 kg.



Macro – Pallets & user kits

Pallet, Ø116 mm, 3R-601.116-75PA

Unhardened pallet with reference element 3R-651.75-P.

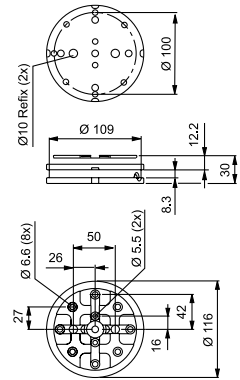
- X, Y & Z-references hardened
- Ready for code carrier
- Adapted for automatic changing.



Pallet, Ø116 mm, MacroHP, 3R-601.52

Hardened, with 3Refix holes and clearance holes for ten fixing screws.

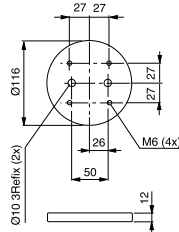
- 3Refix Ø10 mm
- Adapted for automatic changing
- Ready for code carrier
- Parallel-ground top and bottom faces
- Fixed index positions 4x90°
- Rust resistant
- Weight 1.9 kg.



Pallet, Ø116 mm, 3R-608.51E

Unhardened with 3Refix holes and four M6 threads. Designed to be mounted on 3R-601.3 or 3R-601.52.

- 3Refix Ø10 mm
- Supplied in sets of 10
- Weight per set 10 kg.



Sealing ring, High, 3R-612.116-A

Suitable for some Macro chucks with drawbar 3R-605.1*.

Note: Only suitable for Ø116 mm pallets.



*For more info please ask System 3R.

Sealing ring, Low, 3R-612.116-S

Suitable for some Macro chucks with drawbar 3R-605.2*.

Note: Only suitable for Ø116 mm pallets.



*For more info please ask System 3R.

User kit, 3R-628.31-S

3R-605.1	Drawbar, long	x4
3R-605.2	Drawbar, short	x2
3R-610.21-S	Manual table chuck	x1
3R-651.7-S	Ref. element, 54x54 mm	x12
3R-656.1	Check ruler	x1
3R-658.1-S	Spacer plate 54x54 mm	x2
3R-658.4-S	Holder 54x54 mm	x4
3R-658.2-S	Holder 54x54 mm	x4



Macro – User kits & accessories

User kit, 3R-628.41-S



3R-465.1-A	Holder with MacroJunior taper	x4
3R-461.1-GA	Holder with MacroJunior journal	x2
3R-466.4033	Chuck adapter Macro/MacroJunior	x1
3R-466.10033	Chuck adapter Macro/MacroJunior	x1
3R-491	Pallet 25 mm MacroJunior	x10
3R-605.1	Drawbar, long	x4
3R-605.2	Drawbar, short	x2
3R-610.21-S	Manual table chuck	x1
3R-651.7-S	Reference element, 54x54 mm	x8
3R-656.1	Check ruler	x1
3R-658.1-S	Spacer plate 54x54 mm	x2
3R-658.4-S	Holder 54x54 mm	x2
3R-658.2-S	Holder 54x54 mm	x2
	Screw MTF4x12	x90
	Screw wrench	x1



Drawbars

3R-605.1E

- Ø20x57.1 mm with flushing holes Ø7 mm
- Supplied in sets of 10 pcs.

3R-605.1EE

- Supplied in sets of 40 pcs.

3R-605.2RS

- Ø20x36.9 mm with flushing holes Ø7 mm
- Rust resistant
- Supplied 1 pc.

3R-605.14E

- Ø20x57 mm with flushing holes Ø7 mm
- Intended for MacroCombi automatic electrode changers
- Supplied in sets of 10 pcs.



Drawbars

3R-605.2E

- Ø20x36.9 mm with Ø7 mm flushing hole
- Supplied in sets of 5 pcs.

3R-605.2EE

- Supplied in sets of 20 pcs.

3R-605.10

- Ø20x13 mm
- Rust resistant
- Supplied 1 pc.

3R-605.10E

- Supplied in sets of 10 pcs.

3R-605.10EE

- Supplied in sets of 20 pcs.

3R-605.4E

For round pallets adapted for automatic changing

- Ø20x57.1 without flushing hole
- Supplied in sets of 10 pcs.

3R-605.4EE

- Supplied in sets of 40 pcs.

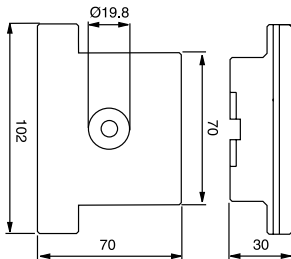


Macro – Accessories

Control ruler, 3R-606.1

For setting angular positions and for centring Macro chucks.

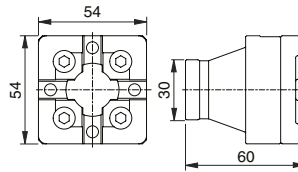
- Ground hole for centring.
- Measuring length 100 mm
- Weight 1.4 kg.



Control ruler, 3R-656.1

For setting angular positions. Ground outside diameter for centring.

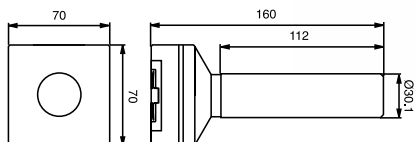
- Measuring length 50 mm
- Weight 0.8 kg.



Control rod, 3R-606

Check mandrel with ground C-reference for setting Macro chucks.

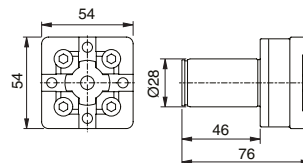
- Measuring length 110 mm
- Weight 2.3 kg.



Control rod, 3R-656

Check mandrel with ground C-reference for setting Macro chucks.

- Measuring length 38 mm
- Weight 1 kg.



Measuring probes

Measuring probes with Renishaw measuring head for machines with measurement cycle function.

- Max ball deflection:
 - X-Axis $\pm 10^\circ$
 - Y-Axis $\pm 10^\circ$
 - Z-Axis ± 3 mm.

3R-656.31-3P

- Building-in height 112 mm
- Measuring ball $\varnothing 3$ mm
- Weight 0.6 kg.



3R-656.31-5P

- Building-in height 112 mm
- Measuring ball $\varnothing 5$ mm
- Weight 0.6 kg.



Measuring probe, 3R-656.21-SP03

Measuring probe with measuring head for machines with measurement cycle function.

- Building-in height 130 mm
- Measuring ball $\varnothing 3$ mm
- Stiff probe
- Weight 0.8 kg.



Macro – Accessories

Microscope, 3R-4.650

With transformer (110/220V) for integral lighting.

- Magnification x25
- Centering location
- Field of view $\varnothing 6$ mm
- Weight 0.8 kg.



Indicating spindle, 3R-656.2-P

For measuring centre holes.

- Dial indicator required
- Weight 0.6 kg.



Centring ring, 3R-612.6

For centring 3R-600.20.



Splash guard, 90027

Splash guard for Macro chucks with long drawbar. Can also be used as a cover for unused chucks.

Note: Does not work with sealing ring 3R-612.116.



Splash guard, 90027.01

Fits MacroStandard chucks with drawbar 3R-605.2.



Macro – Accessories

Clamping force meter kit, 3R-SSP115-BASE

For both pneumatic and manual chucks. This stand alone unit in combination with individual drawbars or drawbar kits, able to cover MacroJunior, Macro, MacroMagnum and Dynafix.

Note: Require drawbars with bayonet interface similar to 3R-605.1.

- Add-on kit for use in Macro/MacroMagnum, 3R-SSP115-MACRO
- Operating temp. +10 to +40° C
- Gauge size Ø90x47 mm
- Working range 1-22 kN
- Deviation ± 0.1 kN.
- Weight:
Display 0.34 kg.
Gauge 1.3 kg.



Add-on kit, 3R-SSP115-Macro

Add-on kit for 3R-SSP115-BASE



Air unit, 3R-611.2

Foot operation of pneumatic chucks.



Air unit, 3R-611.4

Unit for operation of pneumatic chucks. Two functions, opened/closed.



Locking ring key, 3R-605-GE

To lift the locking ring of the drawbars.
• Supplied in sets of 2.



Code carriers, 3R-863.01-10

With pre-programmed unique identity, designed for pallet use.
• Supplied in sets of 10.



Sealing ring, High, 3R-612.70-A

For reference element 70x70 mm.
Suitable for some Macro chucks*.



Sealing ring, Low, 3R-612.70-S

For reference element 70x70 mm.
Suitable for some Macro chucks*.



Sealing ring, Low, 3R-612.75-S

For reference element Ø75 mm.
Suitable for some Macro chucks*.



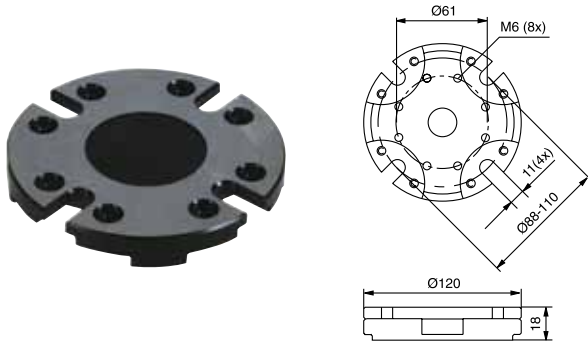
*For more info please ask System 3R.

Macro – Accessories

Adapter plate, 3R-A11489

For mounting of 3R-400.34, 3R-460.34 and 3R-600.24-S.

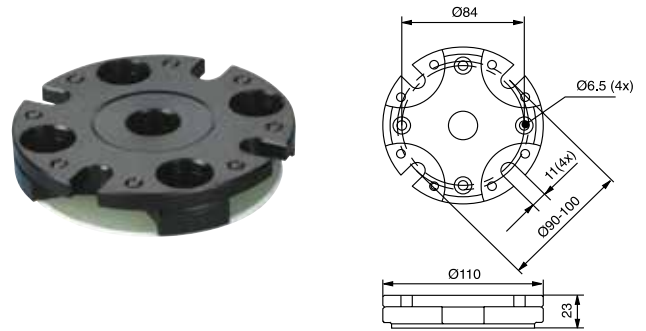
- Supplied with insulation plate and fixing screws
- Flushing connection.



Adapter plate, 3R-A3620

Adapter plate with eight adjusting screws for mounting spindle chucks.

- Supplied with fixing screws
- M10 for 90 mm pitch circle
- M6 for 96 mm pitch circle
- M8 for 100 mm pitch circle.

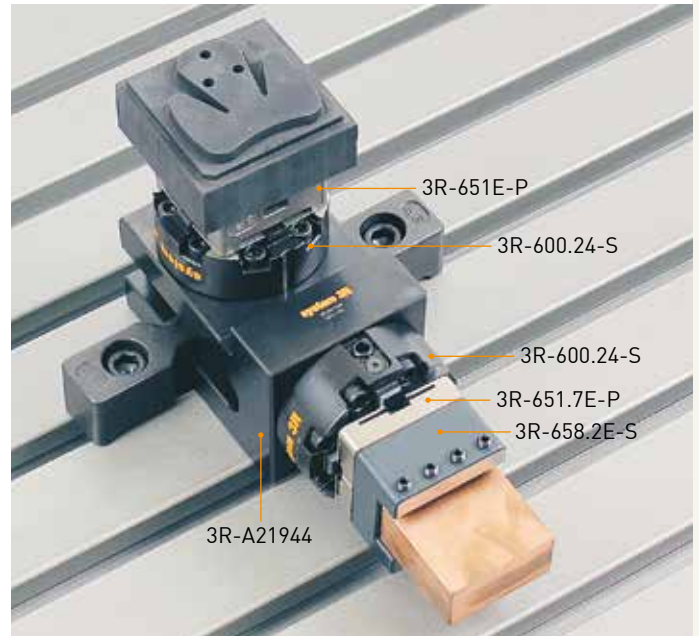


Lathe taper, 3R-TXXXX

Taper attachment for mounting chucks in taper spindles.

Note: Manufactured on request. State machine type, taper (1), drawbar thread (2) and which 3R chuck is to be mounted.

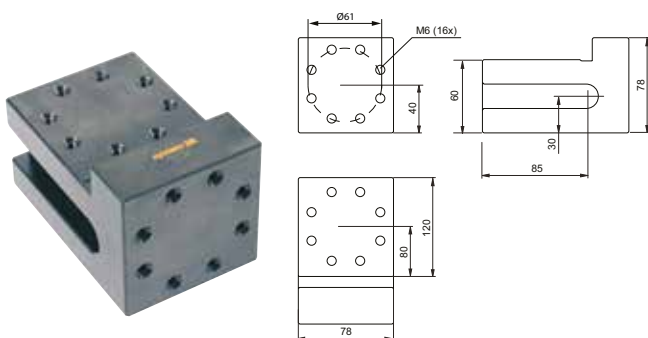
Use the order form at the end of the catalogue.



Angle shelf, 3R-A21944

For vertical or horizontal mounting of 3R-400.34, 3R-460.34 and 3R-600.24-S on the machine table. Intended for milling.

Note: Chuck to be ordered separately.

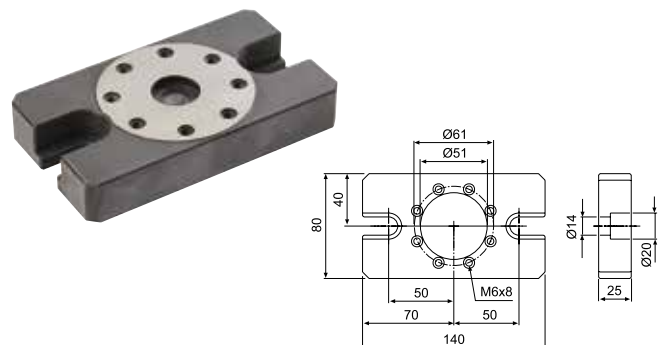


Adapter plate, 3R-A19724

For mounting of 3R-400.34, 3R-460.34 and 3R-600.24-S on machine table.

Note: Chuck to be ordered separately

- Supplied with fixing screws for chuck and table.



Macro – Accessories

Electrode cassette, 3R-650/8x5

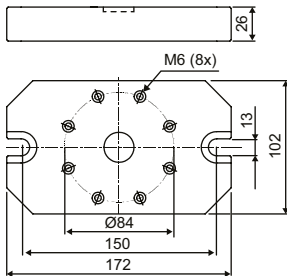
For eight electrodes 52x52 and 54x54 mm.

- Supplied in sets of 5.



Adapter plate, 3R-A26488

For mounting 3R-600.28-S.



Torque wrenches, 3R-614-04

Mainly for MacroCombi and Ø10 3Refix mandrels.

- 4 Nm.

3R-614-06

For Macro chucks

- 6 Nm.



3Refix mandrel, 3R-901-10E-TX

- 3Refix Ø10 mm
- Recommended tightening torque 4 Nm
- Supplied in sets of 10
- Weight per set 0.2 kg.

Note: When positioning with 3Refix mandrels –always tighten the expanding mandrel in the R⁰ hole first.



Converter kit, 90842.01

To convert 3R-600.24-S to enable long drawbar 3R-605.1.

